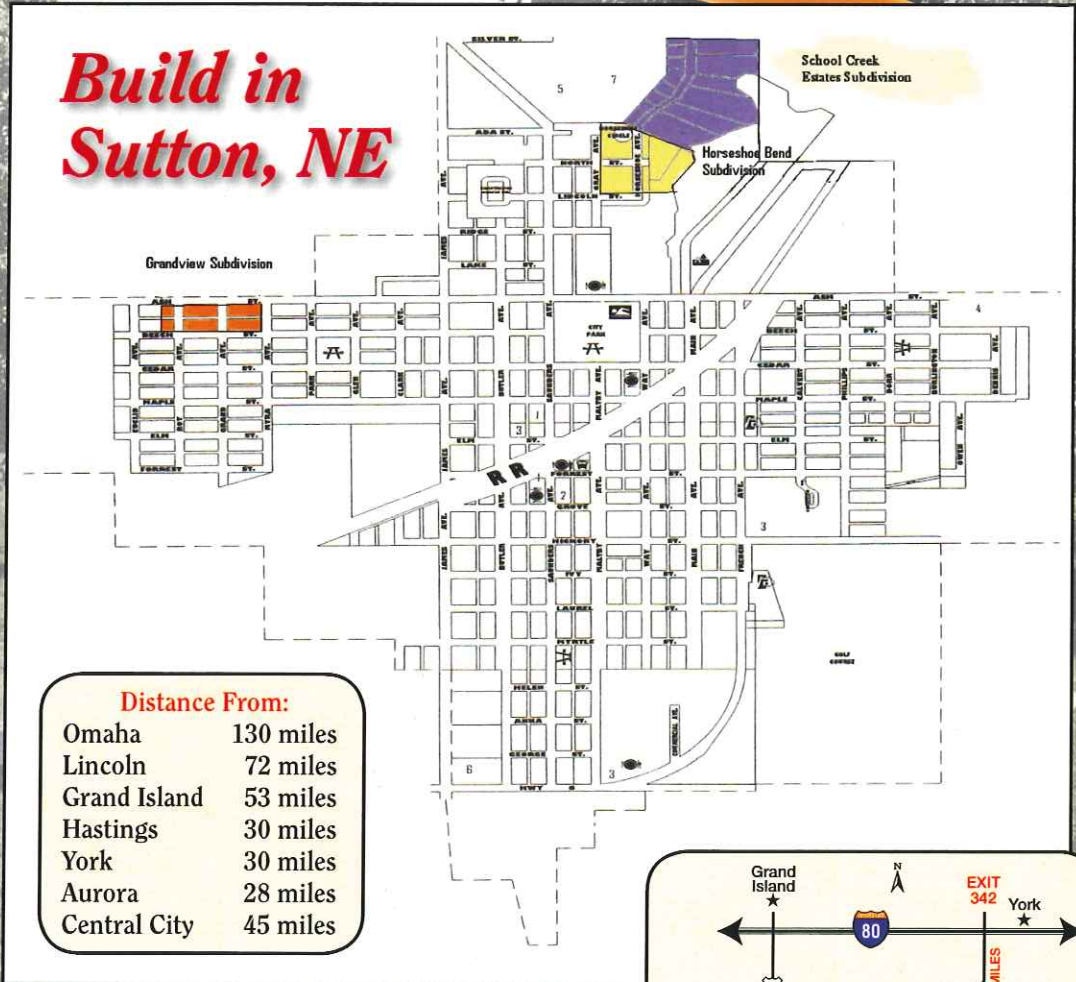


COME SEE WHAT SUTTON HAS TO OFFER!



Build in Sutton, NE



Distance From:

Omaha	130 miles
Lincoln	72 miles
Grand Island	53 miles
Hastings	30 miles
York	30 miles
Aurora	28 miles
Central City	45 miles



- Great Schools
- Sutton Aquatic Facility
- Fox Hollow Golf Course
- Clean Community
- Friendly People
- Competitive Spirit

*We Love Our Town
and You Will Too!*

Visit us on the web at www.cityofsutton.org

3 SUBDIVISIONS

Horseshoe Bend Subdivision

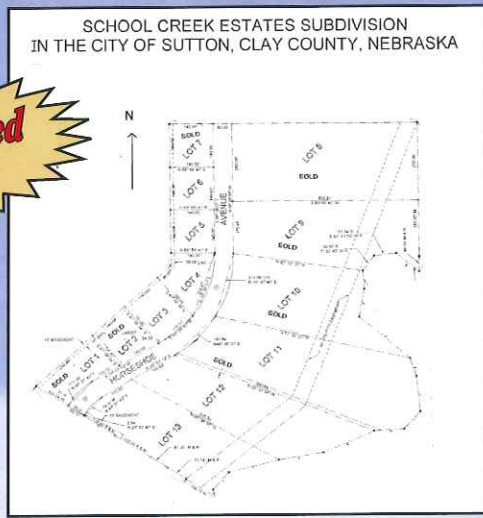
CONTACT: Virg Ulmer, Sutton City Administrator
 P.O. Box 430, Sutton, NE 68979
 Ph. (402) 773-4225 • Fax (402) 773-5501
 E-mail: cityadmsutton@mainstaycomm.net



**Established
2000**



**Lots from \$9,000
No Special Assessments**



**Established
2002**

School Creek Estates Subdivision

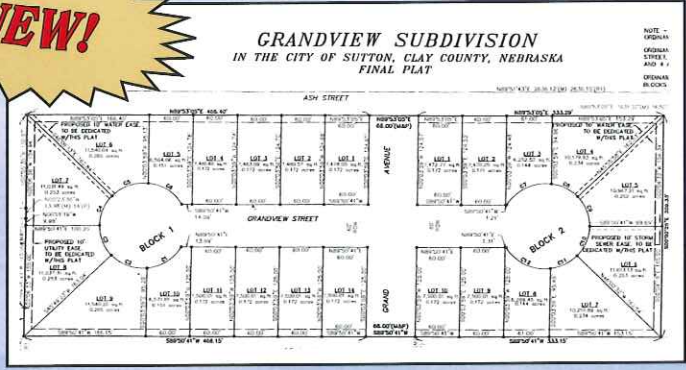
CONTACT: Jim VanKirk
 P.O. Box 585, Sutton, NE 68979
 Ph. (402) 773-5250
 E-mail: Jim.vkb@mainstaycomm.net

**Lots from \$7,000
No Special Assessments**

Grandview Subdivision

CONTACT: Max Bergen, Bergen Real Estate
 P.O. Box 201, Sutton, NE 68979
 Ph. (402) 773-5513
 E-mail: mb42326@navix.net

NEW!



**Lots from \$3,000
Special Assessments Will Apply**

For more information on what Sutton can offer YOU, contact:
Sutton Area Chamber of Commerce
 P.O. Box 687 • Sutton, NE 68979 • (402) 773-4233
 schamber@mainstaycomm.net • www.suttonchamber.org